

FANTASTIC BEASTS
&
WHERE TO FIND THEM

Newt Scamander

Property of:

Harry Potter

FANTASTIC BEASTS
AND WHERE TO FIND THEM

NEWT SCAMANDER

Special edition with a foreword by
ALBUS DUMBLEDORE



Arthur A. Levine Books

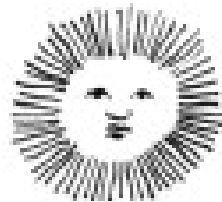
AN IMPRINT OF SCHOLASTIC PRESS

in association with



Obscurus Books

18a Diagon Alley, LONDON



THIS BOOK BELONGS TO

Harry Potter

shared by Ron Weasley

because his fell apart

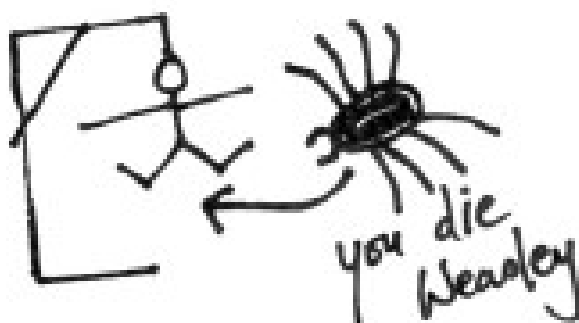
why don't you buy a new one then?

write on your own book

Hermione

you bought all those dungbombs
on Saturday, you could have
bought a new book instead

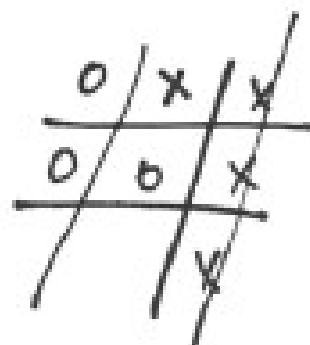
Dungbombs rule



a - - - - a n - - - l a

g x s y d e
 r r j z k b

Harry
 loves
~~reading~~
~~writing~~



Text copyright © 2001 by J. K. Rowling. • Illustrations and hand lettering copyright © 2000 by J. K. Rowling. All rights reserved. Published by Scholastic Press, a division of Scholastic Inc., Publisher since 1920. SCHOLASTIC, SCHOLASTIC PRESS, and the LANTERN LOGO are trademarks and/or registered trademarks of Scholastic Inc. HARRY POTTER and all related characters, names, and related indicia are trademarks of Warner Bros.

No part of this publication may be reproduced, or stored in a retrieval system, or transmitted in any form or by any means, electronic, mechanical, photocopying, recording, or otherwise, without written permission of the publisher. For information regarding permissions, write to Scholastic Inc., Attention: Permissions Department, 555 Broadway, New York, NY 10017.

Scholastic Inc. has arranged for twenty percent of the retail sales price less taxes from the sale of this book to go to Comic Relief U.K.'s Harry's Books fund. J. K. Rowling is donating all royalties to which she would be entitled. The purchase of this book is not tax deductible. Comic Relief may be contacted at: Comic Relief, 5th Floor, Albert Embankment, London SE1 77P, England (www.comicrelief.com). Comic Relief in the United Kingdom is not affiliated with the organization of the same name in the United States.

ISBN 0-439-32140-3

Library of Congress Cataloging-in-Publication Data Available
 20 03 18 17 07 08 09

Printed in the United States and bound in Mexico 23

First hardcover boxed edition, September 2001

MINISTRY OF MAGIC CLASSIFICATIONS

The Department for the Regulation and Control of Magical Creatures gives classifications to all known beasts, beings, and spirits. These offer an at-a-glance guide to the perceived dangerousness of a creature. The five categories are as follows:

Ministry of Magic (M.O.M.) Classification

XXXXX	Known wizard killer / impossible to train or domesticate <i>or anything Hagrid likes</i>
XXXX	Dangerous / requires specialist knowledge / skilled wizard may handle
XXX	Competent wizard should cope
XX	Harmless / may be domesticated
X	Boring

In some cases I have felt an explanation for the classification of a particular beast is necessary and have added footnotes accordingly.

AN A-Z OF FANTASTIC BEASTS

ACROMANTULA

M.O.M. Classification: XXXXXYXYXY XXXXX

The Acromantula is a monstrous eight-eyed spider capable of human speech. It originated in Borneo, where it inhabits dense jungle. Its distinctive features include the thick black hair that covers its body; its legspan, which may reach up to fifteen feet; its pincers, which produce a distinctive clicking sound when the Acromantula is excited or angry; and a poisonous secretion. The Acromantula is carnivorous and prefers large prey. It spins dome-shaped webs upon the ground. The female is bigger than the male and may lay up to one hundred eggs at a time. Soft and white, these are as large as beach balls. The young hatch in six to eight weeks. Acromantula eggs are defined as Class A Non-Tradeable Goods by the Department for the Regulation and Control of Magical Creatures, meaning that severe penalties are attached to their importation or sale.

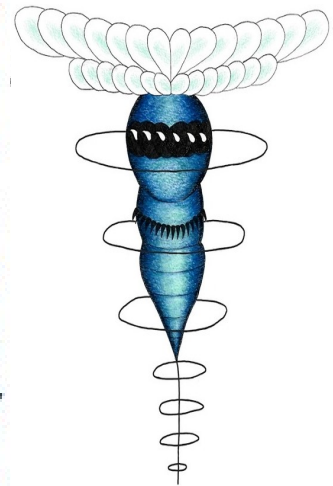
This beast is believed to be wizard-bred, possibly intended to guard wizard dwellings or treasure, as is often the case with magically created monsters.¹ Despite its near-human intelligence,

¹ Beasts capable of human speech are rarely self-taught; an exception is the Jarvey. The Ban on Experimental Breeding did not come into effect until this century, long after the first recorded sighting of an Acromantula in 1794.

BILLYWIG

M.O.M. Classification: XXX

The Billywig is an insect native to Australia. It is around half an inch long and a vivid sapphire blue, although its speed is such that it is rarely noticed by Muggles and often not by wizards until they have been stung. The Billywig's wings are attached to the top of its head and are rotated very fast so that it spins as it flies. At the bottom of the body is a long thin sting. Those who have been stung by a Billywig suffer giddiness followed by levitation. Generations of young Australian witches and wizards have attempted to catch Billywigs and provoke them into stinging in cause the victim to hover uncontrollably for days on end, and where there is a severe allergic reaction, permanent floating may ensue. Dried Billywig stings are used in several potions and are believed to be a component in the popular sweet Fizzing Whizbees.



BOWTRUCKLE

M.O.M. Classification: XX

The Bowtruckle is a tree-guardian creature found mainly in the west of England, southern Germany, and certain Scandinavian forests. It is immensely difficult to spot, being small (maximum eight inches in height) and apparently made of bark and twigs with two small brown eyes.

The Bowtruckle, which eats insects, is a peaceable and intensely shy creature but if the tree in which it lives is threatened, it has been known to leap down upon the woodcutter



or tree-surgeon attempting to harm its home and gouge at their eyes with its long, sharp fingers. An offering of woodlice will placate the Bowtruckle long enough to let a witch or wizard remove wand-wood from its tree.

CHIZPURFLE

M.O.M. Classification: XX

Chizpurples are small parasites up to a twentieth of an inch high, crablike in appearance, with large fangs. They are attracted by magic and may infest the fur and feathers of such creatures as Crups and Augureys. They will also enter wizard dwellings and attack magical objects such as wands, gradually gnawing their way through to the magical core, or else settle in dirty cauldrons, where they will gorge upon any lingering drops of potion.⁶ Though Chizpurples are easy enough to destroy with any of a number of patented potions on the market, severe infestations may require a visit from the Pest Sub-Division of the Department for the Regulation and Control of Magical Creatures, as Chizpurples swollen with magical substances will prove very hard to fight.



DEMIGUISE

M.O.M. Classification: XXXX

The Demiguise is found in the Far East, though only with great difficulty, for this beast is able to make itself invisible when threatened, and can be seen only by wizards skilled in its capture.

The Demiguise is a peaceful herbivorous beast, something like a graceful ape in appearance, with large, black, doleful eyes more often than not hidden by its hair. The whole body is covered with long, fine, silky, silvery hair. Demiguise pelts are highly valued as the hair may be spun into Invisibility Cloaks.

DIRICAWL

M.O.M. Classification: XX

The Diricawl originated in Mauritius. A plump-bodied, fluffy-feathered, flightless bird, the Diricawl is remarkable for its method of escaping danger. It can vanish in a puff of feathers and reappear elsewhere (the phoenix shares this ability; see page 32).

Interestingly, Muggles were once fully aware of the existence of the Diricawl, though they knew it by the name of “dodo.” Unaware that the Diricawl could vanish at will, Muggles believe they have hunted the species to extinction. As this seems to have raised Muggle awareness of the dangers of slaying their fellow creatures indiscriminately, the International Confederation of Wizards has never deemed it appropriate that the Muggles should be made aware of the continued existence of the Diricawl.

DOXY

(sometimes known as Biting Fairy)

M.O.M. Classification: XXX

The Doxy is often mistaken for a fairy (see page 16) though it is a quite separate species. Like the fairy, it has a minute human form, though in the Doxy’s case this is covered in thick black hair and has an extra pair of arms and legs. The Doxy’s wings are thick, curved, and shiny, much like a beetle’s. Doxies are found throughout northern Europe and America, preferring cold climates. They lay up to five hundred eggs at a time and bury them. The eggs hatch in two to three weeks.

Doxies have double rows of sharp, venomous teeth. An antidote should be taken if bitten.



ERUMPENT

M.O.M. Classification: XXXX



The Erumpent is a large grey African beast of great power. Weighing up to a tonne, the Erumpent may be mistaken for a rhinoceros at a distance. It has a thick hide that repels most charms and curses, a large, sharp horn upon its nose and a long, rope-like tail. Erumpents give birth to only one calf at a time.

The Erumpent will not attack unless sorely provoked, but should it charge, the results are usually catastrophic. The Erumpent's horn can pierce everything from skin to metal, and contains a deadly fluid which will cause whatever is injected with it to explode.

Erumpent numbers are not great, as males frequently explode each other during the mating season. They are treated with great caution by African wizards. Erumpent horns, tails, and the Exploding Fluid are all used in potions, though classified as Class B Tradeable Materials (Dangerous and Subject to Strict Control).

FWOOPER

M.O.M. Classification: XXX

The Fwooper is an African bird with extremely vivid plumage; Fwoopers may be orange, pink, lime green, or yellow. The Fwooper has long been a provider of fancy quills and also lays brilliantly patterned eggs. Though at first enjoyable, Fwooper song will eventually drive the listener to insanity⁸ and



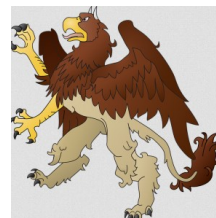
the Fwooper is consequently sold with a Silencing Charm upon it, which will need monthly reinforcement. Fwooper owners require licences, as the creatures must be handled responsibly.

GRAPHORN

M.O.M. Classification: XXXX



The Graphorn is found in mountainous European regions. Large and greyish purple with a humped back, the Graphorn has two very long, sharp horns, walks on large, four-thumbed feet, and has an extremely aggressive nature. Mountain trolls can occasionally be seen mounted on Graphorns, though the latter do not seem to take kindly to attempts to tame them and it is more common to see a troll covered in Graphorn scars. Powdered Graphorn horn is used in many potions, though it is immensely expensive owing to the difficulty in collecting it. Graphorn hide is even tougher than a dragon's and repels most spells.



GRIFFIN

M.O.M. Classification: XXXX

The griffin originated in Greece and has the front legs and head of a giant eagle, but the body and hind legs of a lion. Like sphinxes (see page 39), griffins are often employed by wizards to guard treasure. Though griffins are fierce, a handful of skilled wizards have been known to befriend one. Griffins feed on raw meat.



GRINDYLOW

M.O.M. Classification: XX

A horned, pale-green water demon, the Grindyflow is found in lakes throughout Britain and Ireland. It feeds on small fish and is aggressive towards wizards and Muggles alike, though merpeople have been known to domesticate it. The Grindyflow has very long fingers, which, though they exert a powerful grip, are easy to break.

IMP

M.O.M. Classification: XX

The imp is found only in Britain and Ireland. It is sometimes confused with the pixie. They are of similar height (between six and eight inches), though the imp cannot fly as the pixie can, nor is it as vividly coloured (the imp is usually dark brown to black). It does, however, have a similar slapstick sense of humour. Its preferred terrain is damp and marshy, and it is often found near river banks, where it will amuse itself by pushing and tripping the unwary. Imps eat small insects and have breeding habits much like the fairies, though imps do not spin cocoons; the young are hatched fully formed at around one inch in length.

JARVEY

M.O.M. Classification: XXX

The Jarvey is found in Britain, Ireland, and North America. It resembles an overgrown ferret in most respects, except for the fact that it can talk. True conversation, however, is beyond the wit of the Jarvey, which tends to confine itself to short (and often rude) phrases in an almost constant stream. Jarveys live mostly below ground, where they pursue gnomes, though they will also eat moles, rats, and voles.

KAPPA

M.O.M. Classification: XXXX *Snope hasn't read this either*

The Kappa is a Japanese water demon that inhabits shallow ponds and rivers. Often said to look like a monkey with fish scales instead of fur, it has a hollow in the top of its head in which it carries water.

The Kappa feeds on human blood but may be persuaded not to harm a person if it is thrown a cucumber with that person's name carved into it. In confrontation, a wizard should trick the Kappa into bowing – if it does so, the water in the hollow of its head will run out, depriving it of all its strength.

LEPRECHAUN (sometimes known as Clauricorn)

M.O.M. Classification: XXX

More intelligent than the fairy and less malicious than the imp, the pixie, or the Doxy, the leprechaun is nevertheless mischievous. Found only in Ireland, it achieves a height of up to six inches and is green in colour. It has been known to create crude clothing from leaves. Alone of the “little people,” leprechauns can speak, though they have never requested reclassification as “beings.” The leprechaun bears live young and lives mostly in forest and woodland areas, though it enjoys attracting Muggle attention and as a consequence features almost as heavily as the fairy in Muggle literature for children. Leprechauns produce a realistic goldlike substance that vanishes after a few hours, to their great amusement. Leprechauns eat leaves and, despite their reputation as pranksters, are not known ever to have done lasting damage to a human.

but not mine. R.W.

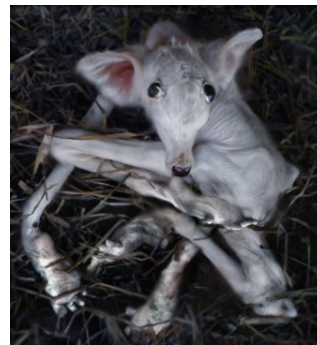


MURTLAP

M.O.M. Classification: XXX



The Murtlap is a ratlike creature found in coastal areas of Britain. It has a growth upon its back resembling a sea anemone. When pickled and eaten, these Murtlap growths promote resistance to curses and jinxes, though an overdose may cause unsightly purple ear hair. Murtlaps eat crustaceans and the feet of anyone foolish enough to step on them.



MOONCALF

M.O.M. Classification: XX

The Mooncalf is an intensely shy creature that emerges from its burrow only at the full moon. Its body is smooth and pale grey, it has bulging round eyes on top of its head, and four spindly legs with enormous flat feet. Mooncalves perform complicated dances on their hind legs in isolated areas in the moonlight. These are believed to be a prelude to mating (and often leave intricate geometric patterns behind in wheat fields, to the great puzzlement of Muggles).

Watching Mooncalves dance by moonlight is a fascinating experience and often profitable, for if their silvery dung is collected before the sun rises and spread upon magical herb and flower beds, the plants will grow very fast and become extremely strong. Mooncalves are found worldwide.

NIFFLER

M.O.M. Classification: XXX



The Niffler is a British beast. Fluffy, black, and long-snouted, this burrowing creature has a predilection for anything glittery. Nifflers are often kept by goblins to burrow deep into the earth for treasure. Though the Niffler is gentle and even affectionate, it can be destructive to belongings and should never be kept in a house. Nifflers live in lairs up to twenty feet below the surface and produce six to eight young in a litter.

NUDU

M.O.M. Classification: XXXXX



This East African beast is arguably the most dangerous in the world. A gigantic leopard that moves silently despite its size and whose breath causes disease virulent enough to eliminate entire villages, it has never yet been subdued by fewer than a hundred skilled wizards working together.



OCCAMY

M.O.M. Classification: XXXX

The Occamy is found in the Far East and India. A plumed, two-legged winged creature with a serpentine body, the Occamy may reach a length of fifteen feet. It feeds mainly on rats and birds, though has been known to carry off monkeys. The Occamy is aggressive to all who approach it, particularly in defence of its eggs, whose shells are made of the purest, softest silver.

PHOENIX

M.O.M. Classification: XXXX¹¹



The phoenix is a magnificent, swan-sized, scarlet bird with a long golden tail, beak, and talons. It nests on mountain peaks and is found in Egypt, India, and China. The phoenix lives to an immense age as it can regenerate, bursting into flames when its body begins to fail and rising again from the ashes as a chick. The phoenix is a gentle creature that has never been known to kill and eats only herbs. Like the Diricawl (see page 9), it can disappear and reappear at will. Phoenix song is magical; it is reputed to increase the courage of the pure of heart and to strike fear into the hearts of the impure. Phoenix tears have powerful healing properties.

QUINTAPED

(also known as Hairy MacBoon)

M.O.M. Classification: XXXXX



The Quintaped is a highly dangerous carnivorous beast with a particular taste for humans. Its low-slung body is covered with thick reddish-brown hair, as are its five legs, each of which ends in a clubfoot. The Quintaped is found only upon the Isle of Drear off the northernmost tip of Scotland. Drear has been made unplottable for this reason.

RAMORA

M.O.M. Classification: XX

The Ramora is a silver fish found in the Indian Ocean. Powerfully magical, it can anchor ships and is a guardian of seafarers. The Ramora is highly valued by the International Confederation of Wizards, which has set many laws in place to protect the Ramora from wizard poachers.

SPHINX

M.O.M. Classification: XXXX

The Egyptian sphinx has a human head on a lion's body. For over a thousand years it has been used by witches and wizards to guard valuables and secret hideaways. Highly intelligent, the sphinx delights in puzzles and riddles. It is usually dangerous only when what it is guarding is threatened.



TROLL

M.O.M. Classification: XXXX

The troll is a fearsome creature up to twelve feet tall and weighing over a tonne. Notable for its equally prodigious strength and stupidity, the troll is often violent and unpredictable. Trolls originated in Scandinavia but these days they may be found in Britain, Ireland, and other areas of northern Europe.

Trolls generally converse in grunts that appear to constitute a crude language, though some have been known to understand and even to speak a few simple human words. The more intelligent of the species have been trained as guardians.

There are three types of troll: mountain, forest, and river. The mountain troll is the largest and most vicious. It is bald, with a pale-grey skin. The forest troll has a pale-green skin and some specimens have hair, which is green or brown, thin, and straggly. The river troll has short horns and may be hairy. It has a purplish skin, and is often found lurking beneath bridges. Trolls eat raw flesh and are not fussy in their prey, which ranges from wild animals to humans.

UNICORN

*M.O.M. Classification: XXXX*¹⁴

The unicorn is a beautiful beast found throughout the forests of northern Europe. It is a pure white, horned horse when fully grown, though the foals are initially golden, and turn silver before achieving maturity. The unicorn's horn, blood, and hair all have highly magical properties.¹⁵ It generally avoids human contact, is more likely to allow a witch to approach it than a wizard, and is so fleet of foot that it is very difficult to capture.

WEREWOLFS *aren't all bad*

*M.O.M. Classification: XXXXX*¹⁶

The werewolf is found worldwide, though it is believed to have originated in northern Europe. Humans turn into werewolves only when bitten. There is no known cure, though recent developments in potion-making have to a great extent alleviated the worst symptoms. Once a month, at the full moon, the otherwise sane and normal wizard or Muggle afflicted transforms into a murderous beast. Almost uniquely among fantastic creatures, the werewolf actively seeks humans in preference to any other kind of prey.

YETI (also known as Bigfoot, the Abominable Snowman)

M.O.M. Classification: XXXX

A native of Tibet, the yeti is believed to be related to the troll, though no one has yet got close enough to conduct the necessary tests. Up to fifteen feet in height, it is covered head to foot in purest white hair. The yeti devours anything that strays into its path, though it fears fire, and may be repulsed by skilled wizards.

Beasts that appear in the film but are not in the book :

The SWOOPING EVIL



The Swooping Evil is a large, blue-and-green winged magical creature. It looks like a cross between a reptile and an extremely large butterfly, and, when it is not spreading its spiked wings in mid-flight, the Swooping Evil lives in a green spiny cocoon. It can be quite dangerous, as it can feed on people's brains (which it "sucks out"). It also secretes venom that, when properly



The GIANT DUNG BEETLES

The THUNDERBIRD

The Thunderbird is a large creature native to the arid climate of Arizona. Its head is similar to that of an eagle or, in the wizarding world, a Hippogriff. Its multiple powerful wings shimmer with cloud-and sun-like patterns and their flapping can create storms. Thunderbirds can also sense danger.




*A copy of **Fantastic Beasts & Where to Find Them** resides in almost every wizarding household in the country. Now, for a limited period only, Muggles too have the chance to discover where the Quintaped lives, what the Puffskein eats, and why it is best not to leave milk out for a Knarl.*


Proceeds from the sale of this book will go to improving and saving the lives of children around the world, which means that the dollars and Galleons you exchange for it will do magic beyond the powers of any wizard. If you feel that this is insufficient reason to part with your money, I can only hope most sincerely that passing wizards feel more charitable if they ever see you being attacked by a Manticore.

Albus Dumbledore

J. K. ROWLING and SCHOLASTIC INC. have arranged for twenty percent of the retail sales price less taxes of this book to go to the Harry's Books fund to help needy children in the poorest countries in the world.

www.comicrelief.com/harrysbooks

 Biscurus Books
in association with


Arthur A. Levine Books
AN IMPRINT OF SCHOLASTIC PRESS

